

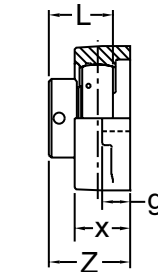
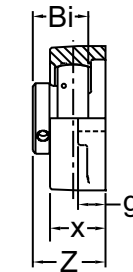
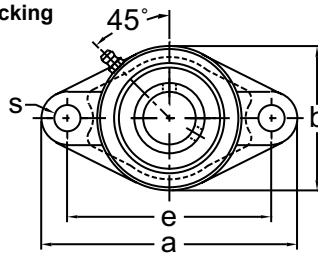


TWO-BOLT FLANGE UNITS

BFT / KHFT200

NORMAL DUTY

Set-Screw/Eccentric Locking
Narrow Inner Ring
Cast Iron Housing
Insert Detail-pg.116,117
Inch and Metric



BFT 200 Type
Set-Screw Locking

KHFT 200 Type
Eccentric Collar Locking



Shaft Diam. (in.)	AMI Unit # Complete with B Type	List Price	AMI Unit # Complete with KH200 Type	List Price	Dimensions (in.)										Bolt Size (in.)	Bearing #		Housing #	Weight (lb.)
					a	e	g	x	s	b	Z		Bi	L		B	KH		
											BFT	KHFT							
1/2	BFT201-8	42.60	KHFT201-8	43.20	4-13/32	3	7/16	31/32	13/32	2-3/8	1.303	1.543	0.866	1-1/8	3/8	B1-8	KH201-8	FT203	0.86
5/8	BFT202-10	42.60	KHFT202-10	43.20	4-13/32	3	7/16	31/32	13/32	2-3/8	1.303	1.543	0.866	1-1/8	3/8	B2-10	KH202-10	FT203	0.86
3/4	BFT204-12	42.60	KHFT204-12	43.20	4-13/32	3-17/32	7/16	31/32	13/32	2-3/8	1.260	1.488	0.972	1-7/32	3/8	B4-12	KH204-12	FT204	1.01
7/8	BFT205-14	45.20	KHFT205-14	47.10	4-7/8	3-57/64	17/32	1-1/16	1/2	2-3/4	1.394	1.551	1.063	1-7/32	7/16	B5-14	KH205-14	FT205	1.43
15/16	BFT205-15	45.20	KHFT205-15	47.10	4-7/8	3-57/64	17/32	1-1/16	1/2	2-3/4	1.394	1.551	1.063	1-7/32	7/16	B5-15	KH205-15	FT205	1.43
1	BFT205-16	42.85	KHFT205-16	42.85	4-7/8	3-57/64	17/32	1-1/16	1/2	2-3/4	1.394	1.551	1.063	1-7/32	7/16	B5-16	KH205-16	FT205	1.43
1-1/8	BFT206-18	63.20	KHFT206-18	66.45	5-9/16	4-19/32	17/32	1-3/16	1/2	3-1/4	1.583	1.756	1.193	1-13/32	7/16	B6-18	KH206-18	FT206	2.12
1-3/16	BFT206-19	63.20	KHFT206-19	66.45	5-9/16	4-19/32	17/32	1-3/16	1/2	3-1/4	1.583	1.756	1.193	1-13/32	7/16	B6-19	KH206-19	FT206	2.12
1-1/4	BFT206-20	63.20	KHFT206-20	66.45	5-9/16	4-19/32	17/32	1-3/16	1/2	3-1/4	1.583	1.756	1.193	1-13/32	7/16	B6-20	KH206-20	FT206	2.12
1-1/4	BFT207-20	72.60	KHFT207-20	80.00	6-1/8	5-1/8	9/16	1-11/32	35/64	3-3/4	1.713	1.909	1.295	1-17/32	1/2	B7-20	KH207-20	FT207	3.1
1-5/16	BFT207-21	72.60	KHFT207-21	80.00	6-1/8	5-1/8	9/16	1-11/32	35/64	3-3/4	1.713	1.909	1.295	1-17/32	1/2	B7-21	KH207-21	FT207	3.1
1-3/8	BFT207-22	72.60	KHFT207-22	80.00	6-1/8	5-1/8	9/16	1-11/32	35/64	3-3/4	1.713	1.909	1.295	1-17/32	1/2	B7-22	KH207-22	FT207	3.1
1-7/16	BFT207-23	72.60	KHFT207-23	80.00	6-1/8	5-1/8	9/16	1-11/32	35/64	3-3/4	1.713	1.909	1.295	1-17/32	1/2	B7-23	KH207-23	FT207	3.1
1-1/2	BFT208-24	101.35	KHFT208-24	91.20	6-3/4	5-21/32	9/16	1-1/2	35/64	4-1/8	1.870	2.114	1.398	1-23/32	1/2	B8-24	KH208-24	FT208	3.97
1-5/8	—	—	KHFT209-26	103.65	7-1/16	5-27/32	9/16	1-9/16	5/8	4-3/8	—	2.146	—	1-23/32	9/16	—	KH209-26	FT209	4.36
1-11/16	—	—	KHFT209-27	103.65	7-1/16	5-27/32	9/16	1-9/16	5/8	4-3/8	—	2.146	—	1-23/32	9/16	—	KH209-27	FT209	4.36
1-3/4	—	—	KHFT209-28	103.65	7-1/16	5-27/32	9/16	1-9/16	5/8	4-3/8	—	2.146	—	1-23/32	9/16	—	KH209-28	FT209	4.36
1-7/8	—	—	KHFT210-30	119.40	7-7/16	6-3/16	9/16	1-9/16	5/8	4-9/16	—	2.161	—	1-23/32	9/16	—	KH210-30	FT210	4.56
1-15/16	—	—	KHFT210-31	119.40	7-7/16	6-3/16	9/16	1-9/16	5/8	4-9/16	—	2.161	—	1-23/32	9/16	—	KH210-31	FT210	4.56
2	—	—	KHFT211-32	160.10	8-1/2	7-1/4	13/16	1-3/4	21/32	5-1/4	—	2.433	—	1-29/32	5/8	—	KH211-32	FT211	6.85
2-1/8	—	—	KHFT211-34	160.10	8-1/2	7-1/4	13/16	1-3/4	21/32	5-1/4	—	2.433	—	1-29/32	5/8	—	KH211-34	FT211	6.85
2-3/16	—	—	KHFT211-35	160.10	8-1/2	7-1/4	13/16	1-3/4	21/32	5-1/4	—	2.433	—	1-29/32	5/8	—	KH211-35	FT211	6.85
Dimensions (mm)																			
12	BFT201	42.60	KHFT201	43.20	112	76.2	11	25	10.5	60	33.1	39.2	22	28.6	M8	B1	KH201	FT203	0.86
15	BFT202	42.60	KHFT202	43.20	112	76.2	11	25	10.5	60	33.1	39.2	22	28.6	M8	B2	KH202	FT203	0.86
17	BFT203	42.60	KHFT203	43.20	112	76.2	11	25	10.5	60	33.1	39.2	22	28.6	M8	B3	KH203	FT203	0.83
20	BFT204	42.60	KHFT204	43.20	112	89.7	11	25	10.5	60	32.0	37.8	24.7	31	M8	B4	KH204	FT204	1.01
25	BFT205	45.20	KHFT205	47.10	124	98.8	13	27	12.5	70	35.4	39.4	27	31	M10	B5	KH205	FT205	1.43
30	BFT206	63.20	KHFT206	66.45	141	116.7	13	30	12.5	83	40.2	44.6	30.3	35.7	M10	B6	KH206	FT206	2.12
35	BFT207	72.60	KHFT207	80.00	156	130.2	14	34	14	95	43.5	48.5	32.9	38.9	M12	B7	KH207	FT207	3.10
40	BFT208	101.35	KHFT208	91.20	171	143.7	14	38	14	105	47.5	53.7	35.5	43.7	M12	B8	KH208	FT208	3.97
45	—	—	KHFT209	103.65	179	148.4	14	40	16	111	—	54.5	—	43.7	M14	—	KH209	FT209	4.36
50	—	—	KHFT210	119.40	189	157.2	14	40	16	116	—	54.9	—	43.7	M14	—	KH210	FT210	4.56
55	—	—	KHFT211	160.10	216	184.2	21	44	17	133	—	61.8	—	48.7	M16	—	KH211	FT211	7.12

Lubrication fitting tap size for 1" and smaller shaft sizes, 1/4-28 UNF; for all other sizes, 1/8-27 NPT

INTERCHANGES: VF2E-1 F2B-SXV VCJT FX3W-U FYT-FM AELFL VFT-E