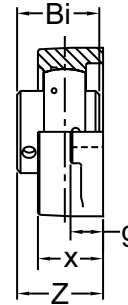
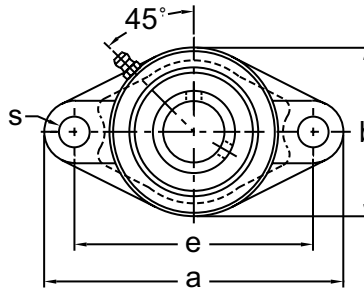


# UCFT 200

## TWO-BOLT FLANGE UNITS



NORMAL DUTY



**Set-Screw Locking  
Wide Inner Ring  
Cast Iron Housing  
Insert Detail-pg.112-113  
Inch and Metric**

Shaft Diam. (in.)	AMI Unit #	List Price	Dimensions (in.)								Bolt Size (in.)	Bearing #	Housing #	Weight (lb.)
			a	e	g	x	s	b	Z	Bi				
1/2	UCFT201-8	44.50	4-13/32	3	7/16	31/32	13/32	2-3/8	1.302	1.024	3/8	UCW201-8	FT203	1.06
9/16	UCFT202-9											UCW202-9		1.04
5/8	UCFT202-10											UCW202-10		1.04
11/16	UCFT203-11											UCW203-11		1.01
3/4	UCFT204-12	44.50	4-13/32	3-17/32	7/16	31/32	13/32	2-3/8	1.283	1.220	3/8	UC204-12	FT204	1.01
7/8	UCFT205-14	49.00	4-7/8	3-57/64	17/32	1-1/16	1/2	2-3/4	1.401	1.339	7/16	UC205-14	FT205	1.41
15/16	UCFT205-15	49.00										UC205-15		
1	UCFT205-16	46.65										UC205-16		
1-1/16	UCFT206-17	64.95	5-9/16	4-19/32	17/32	1-3/16	1/2	3-1/4	1.577	1.500	7/16	UC206-17	FT206	2.12
1-1/8	UCFT206-18											UC206-18		
1-3/16	UCFT206-19											UC206-19		
1-1/4	UCFT206-20											UC206-20		
1-1/4	UCFT207-20	75.45	6-1/8	5-1/8	9/16	1-11/32	35/64	3-3/4	1.750	1.689	1/2	UC207-20	FT207	3.08
1-5/16	UCFT207-21											UC207-21		
1-3/8	UCFT207-22											UC207-22		
1-7/16	UCFT207-23											UC207-23		
1-1/2	UCFT208-24	89.40	6-3/4	5-21/32	9/16	1-1/2	35/64	4-1/8	2.017	1.937	1/2	UC208-24	FT208	3.97
1-9/16	UCFT208-25											UC208-25		
1-5/8	UCFT209-26	99.60	7-1/16	5-27/32	9/16	1-9/16	5/8	4-3/8	2.048	1.937	9/16	UC209-26	FT209	4.41
1-11/16	UCFT209-27											UC209-27		
1-3/4	UCFT209-28											UC209-28		
1-7/8	UCFT210-30	118.35	7-7/16	6-3/16	9/16	1-9/16	5/8	4-9/16	2.158	2.031	9/16	UC210-30	FT210	4.63
1-15/16	UCFT210-31											UC210-31		
2	UCFT210-32											UC210-32		
2	UCFT211-32	146.85	8-1/2	7-1/4	13/16	1-3/4	21/32	5-1/4	2.315	2.189	5/8	UC211-32	FT211	7.05
2-1/8	UCFT211-34											UC211-34		
2-3/16	UCFT211-35											UC211-35		
<b>Dimensions (mm)</b>														
12	UCFT201	44.50	112	76.2	11	25	10.5	60	33.1	26	M8	UCW201	FT203	1.07
15	UCFT202											UCW202		1.05
17	UCFT203											UCW203		1.03
20	UCFT204	44.50	112	89.7	11	25	10.5	60	32.6	31	M8	UC204	FT204	1.03
25	UCFT205	49.00	124	98.8	13	27	12.5	70	35.6	34	M10	UC205	FT205	1.43
30	UCFT206	64.95	141	116.7	13	30	12.5	83	40.1	38.1	M10	UC206	FT206	2.14
35	UCFT207	75.45	156	130.2	14	34	14	95	44.5	42.9	M12	UC207	FT207	3.12
40	UCFT208	89.40	171	143.7	14	38	14	105	51.2	49.2	M12	UC208	FT208	4.01
45	UCFT209	99.60	179	148.4	14	40	16	111	52	49.2	M14	UC209	FT209	4.46
50	UCFT210	118.35	189	157.2	14	40	16	116	54.8	51.6	M14	UC210	FT210	4.68
55	UCFT211	146.85	216	184.2	21	44	17	133	58.8	55.6	M16	UC211	FT211	7.14

Lubrication fitting tap size for 1" and smaller shaft sizes, 1/4-28 UNF; for all other sizes, 1/8-27 NPT

**INTERCHANGES: VF2S-2 F2B-SC YCJT FX3U-N FC2-25 FYTB-TR SFT**