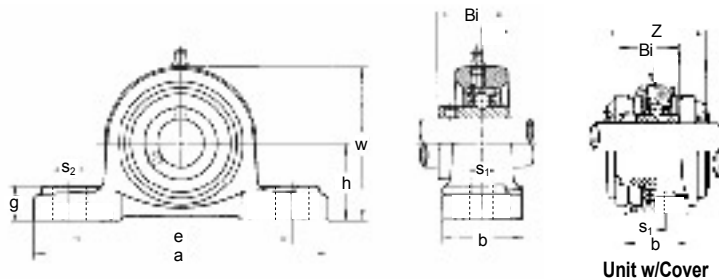


UCP 200 UCP 200C (CE)

PILLOW BLOCKS PILLOW BLOCKS W/PRESSED STEEL COVERS



NORMAL DUTY



- Open Cover (C) w/Contact Seal
- Closed Cover (CE)
- Wide Inner Ring
- Cast Iron Housing
- 0°F ~ 212°F
- Contact Seal and Slinger
- Insert detail on page 108

Shaft Diam. (mm)	AMI Unit #	List Price	AMI Unit #		List Price	Dimensions (mm)													Bolt Size (mm)	Bearing #	Housing #	Weight (lb.)
			Units with Pressed Steel Cover			h	a	e		b	s ₁	s ₂	g	w	Z	Bi						
			Open Cover	Closed Cover				Min.	Max.													
12	UCP 201	44.50	UCP 201C	UCP 201CE	82.20	30.2	127	86	105	38	13	19	15	62	56	31	M10	UC 201	P 203	1.45		
15	UCP 202		UCP 202C	UCP 202CE														UC 202		1.40		
17	UCP 203		UCP 203C	UCP 203CE														UC 203		1.38		
20	UCP 204	44.50	UCP 204C	UCP 204CE	82.20	33.3	127	86	105	38	13	19	15	65	56	31	M10	UC 204	P 204	1.45		
25	UCP 205		UCP 205C	UCP 205CE														UC 205		1.76		
30	UCP 206		UCP 206C	UCP 206CE														UC 206		2.90		
35	UCP 207	75.45	UCP 207C	UCP 207CE	135.60	47.6	167	119	135	48	17	21	19	94	70	42.9	M14	UC 207	P 207	3.57		
40	UCP 208		UCP 208C	UCP 208CE														UC 208		4.46		
45	UCP 209		UCP 209C	UCP 209CE														UC 209		5.13		
50	UCP 210	118.35	UCP 210C	UCP 210CE	217.50	57.2	206	149	168	60	20	25	22	114	87	51.6	M16	UC 210	P 210	6.02		
55	UCP 211		UCP 211C	UCP 211CE														UC 211		7.36		
60	UCP 212		UCP 212C	UCP 212CE														UC 212		10.5		
65	UCP 213	244.60	UCP 213C	UCP 213CE	422.90	76.2	265	193	214	70	25	29	27	150	102	65.1	M20	UC 213	P 213	12.5		
70	UCP 214		—	—														UC 214		16.3		
75	UCP 215		—	—														UC 215		17.6		
80	UCP 216	552.10	—	—	—	88.9	292	220	244	78	25	31	30	175	—	82.6	M20	UC 216	P 216	22.3		
85	UCP 217		—	—														UC 217		27.2		
90	UCP 218		—	—														UC 218		32.8		

(Grease fittings available at 90° and 45° positions)

NOTE: Each unit has two covers. "C" denotes two open covers. "CE" denotes one open cover (thru shaft) on one side and closed cover on the other side.

Common Interchanges: **SUCP205D1** (2 open covers) | **SMUCP205D1** (1 open/1 closed cover)