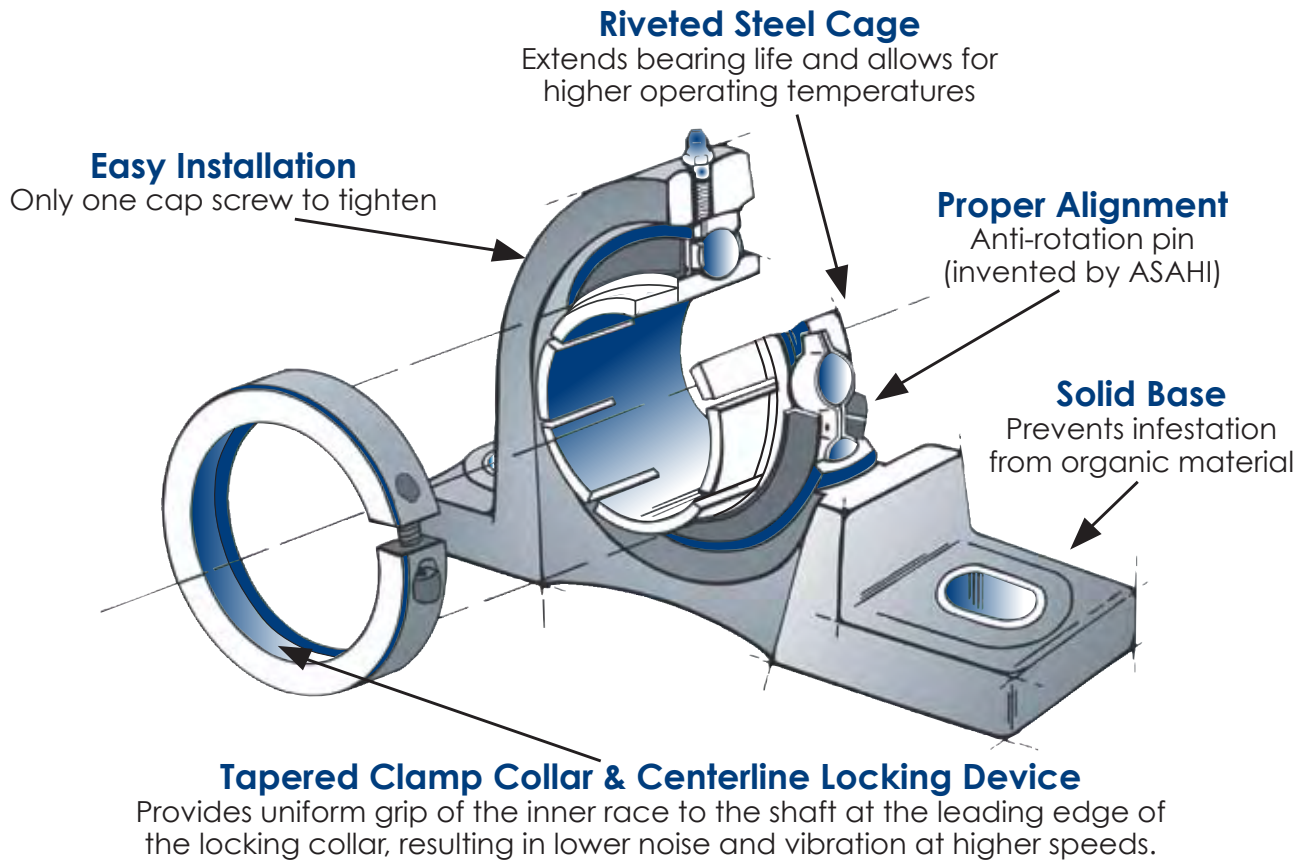


Corrosion Resistant Concentric Locking



PH: (800) 882-8642 • FAX: (847) 759-0630
www.amibearings.com



Special Features

Eliminates vibration / Reduction of noise

No ovality transmitted to the inner raceway

Does not mar or damage shafting

Installs in seconds / Single Cap Screw

True shaft centering

Corrosion resistant bearing intended for washdown and food applications

Housing material available in PBT Thermoplastic, 304 Stainless Steel, and Nickel Plated (CNC)

Provides uniform grip of the inner race to the shaft at the leading edge of the locking collar, resulting in lower noise and vibration at higher speeds

AMI's patented Accu-Loc Collar provides inner ring strength while localizing radial forces

An ideal solution that eliminates over tightening of stainless set-screws

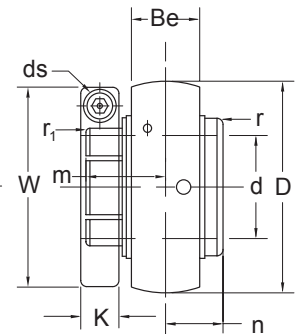
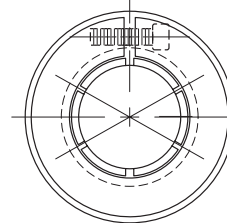
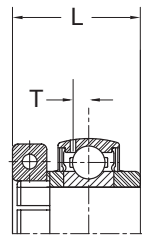
Corrosion Resistant Concentric Locking



PH: (800) 882-8642 • FAX: (847) 759-0630
www.amibearings.com



- Concentric Locking
- Kanigen Plated Bearing
- Available in 3/4" to 1-1/2"
- Normal Duty



Shaft Diam. d (in.)	AMI Unit #	List Price	Dimensions (in.)										
			D	L	Be	r	r ₁	n	m	T	W	K	ds(UNC)
3/4"	UE 204-12MZ20	200.35	1.8504	1.299	0.669	0.059	0.039	0.500	0.720	0.177	1.724	0.374	8-32
1"	UE 205-16MZ20	249.30	2.0472	1.394	0.669	0.059	0.039	0.563	0.780	0.177	1.929	0.374	8-32
1-3/16"	UE 206-19MZ20	281.05	2.4409	1.567	0.748	0.059	0.039	0.626	0.874	0.201	2.185	0.374	8-32
1-1/4"	UE 206-20MZ20		2.4409	1.567	0.748	0.059	0.039	0.626	0.874	0.201	2.185	0.374	8-32
1-1/4"	UE 207-20MZ20	311.40	2.8346	1.728	0.787	0.079	0.039	0.689	1.000	0.228	2.421	0.433	10-24
1-7/16"	UE 207-23MZ20		2.8346	1.728	0.787	0.079	0.039	0.689	1.000	0.228	2.520	0.433	10-24
1-1/2"	UE 208-24MZ20	365.90	3.1496	1.976	0.827	0.079	0.039	0.748	1.189	0.244	2.677	0.433	10-24

Plating Method	Electroless nickel plating (Kanigen Plating)
Plating Thickness	5µm
Plating Parts	Outer Ring, Inner Ring and Slinger
Radial Clearance	Finishing before plating - Outer ring: CN / Inner ring: C5 (So that the bearing should have "C4" radial clearance after assembled)
Collar	SUS304 Stainless Steel
Cap Screw	SUS18-8 Stainless Steel
Locking Pin	Stainless Steel
Rubber Seal	Silicone
Lubrication	Citgo Mystik HT-FG2 (25-35% full of bearing's chamber)
Tolerances	Outer Ring O.D. - Nominal + 10µm Inner Ring Bore - Nominal - 10µm

Corrosion Bearings with "RF Seal & Slinger"

AMI Bearings, Inc.
an **ASAHI** company

PH: (800) 882-8642 • FAX: (847) 759-0630
www.amibearings.com



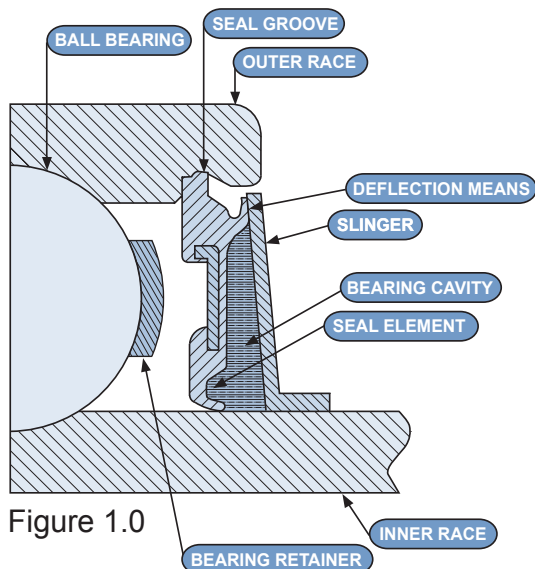
Specifically designed for high-pressure wash down including beverage, food and submersed applications



- Patented Seal Design (PCT:WO 01/053713 A1)
- 440 C Stainless (balls, inner race & outer race)
- All other components are 304 Stainless
- Food Grade Grease: Citgo Mystic HT-FG2
Lubrication Benefits: High-temp, Rust inhibitor, water soluble, resistant to water washout

RF Patent Seal

Patent #WO 01/53713 A1



RF Seal is a patented Double-Lip contact seal specially designed for high-pressure wash down as well as any application that requires maximum sealing efficiency (Figure 1.0).

This invention relates to a low-cost, pressure resistant, seal having enhanced sealing characteristics for use in a bearing assembly.

It's main purpose is to keep contamination from corroding or damaging the internal components. It's most effective against dirt, sawdust, food particles, and moisture.

The RF seal assembly should prevent contaminants from entering the raceway. Such contaminants can impede movement of the rolling elements and render the bearing assembly ineffective.



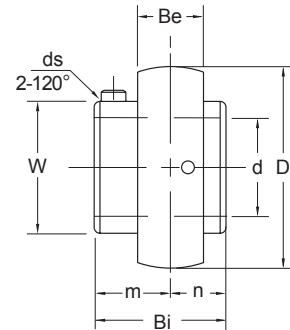
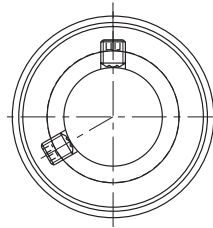
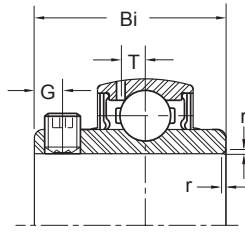
Corrosion Bearings with "RF Seal & Slinger"



PH: (800) 882-8642 • FAX: (847) 759-0630
www.amibearings.com

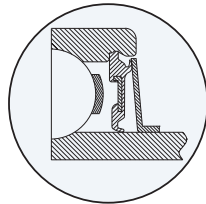


MUC 200 RF
Set-Screw Locking, Normal Duty



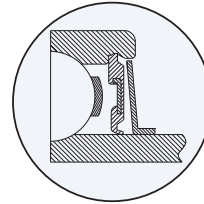
Shaft Diam. (in.) d	AMI Unit #	List Price	Dimensions (in.)										Basic Load Rating (lbs.)		Weight (lb.)
			D	Bi	Be	r	n	m	G	ds(UNF)	T	W	Dynamic Cr	Static Cor	
3/4	MUC 204-12 RF	139.00	1.8504	1.220	0.669	0.059	0.500	0.720	0.177	1/4-28	0.177	1.142	2450	1190	0.35
1	MUC 205-16 RF	154.00	2.0472	1.339	0.669	0.059	0.563	0.776	0.197	1/4-28	0.177	1.339	2680	1420	0.42
1-1/4	MUC 206-20 RF	197.00	2.4409	1.500	0.748	0.059	0.626	0.874	0.197	1/4-28	0.201	1.594	3750	2030	0.68
1-1/4	MUC 207-20 RF	274.00	2.8346	1.689	0.787	0.079	0.689	1.000	0.236	5/16-24	0.228	1.890	4950	2770	1.06
1-7/16	MUC 207-23 RF	292.00	3.1496	1.937	0.827	0.079	0.748	1.189	0.315	5/16-24	0.244	2.087	5600	3210	1.37

AMI's Patented "RF" Contact Seal



Available on all ring sizes listed above excluding narrow width inner race ways.

Standard Contact Seal



Positive sealing for low, medium, and high speed.

AMI's unique design allows for cost effectiveness

AMI's innovative seal snaps into the outer ring,
preventing interference with the bearing retainer

Meets FDA regulations 21-CFR-172 & 21-CFR-178

Ideal for HACCP monitored facilities

Common Interchanges

VS-S216

UC205-16S6PL

SUC205-16

F-UC205-100D1

Designed for High Pressure Wash Down!



Underwater Self-Lubricating Bearings



PH: (800) 882-8642 • FAX: (847) 759-0630
www.amibearings.com

Designed for light-duty, "problem" applications

- Liquid, Damp, or Humid Environments
- Chemical & Pharmaceutical
- Photographic File & Print Processing
- Measuring, Controlling & Laboratory Devices
- Paint, Ink & Dye Applications
- Food Processing
- Heavy calcium applications, such as:



Juice (Orange, Pineapple, Papaya), Cheese, Milk, Cream, Yogurt, Green Vegetables (Spinach, Parsley, Collards), Beans (Red, Kidney, Navy), Breads (Wheat, Mixed Grain), Red Meat, Brown Sugar & Molasses, Club Soda, Custard, Pudding, Fish, Shrimp, Shellfish, Nuts, Seeds, Oats, Granola & Bran, Peanut Butter, Raisins & Figs, Rice & Rice Flour, Soybean & Soy Flour

Recommended Materials

PAG	Computer Assembly Fiber Processing
PAM	Air Conditioning Automotive Beverage Chemical & Pharmaceutical Conveying Dairy (Calcium) Food Processing
PAM/PEM	Textile Finishing
PEG	Electro Plating & Polishing
PEM	Photo Processing

BEARING RACES <ul style="list-style-type: none"> • Poly-Acetal "PA" • Poly-Ethylene "PE" 	BALLS <ul style="list-style-type: none"> • Stainless (316) "M" • Glass "G" • Sleeve "V" 	LOAD OPTIONS <ul style="list-style-type: none"> • Single Row "S" • Double Row "D" 	HOUSINGS GE Valox® 420 Thermoplastic <ul style="list-style-type: none"> • PPL - Pillow Block • FPL - 4 Bolt Flange • NFL - 2 Bolt Flange • TBL - Tap Base • TPL - Take Up, Standard • NTPL - Take Up, Narrow • WTPL - Take Up, Wide • HPL - Hanger • FBL - 3 Bolt Flange Special - 205 Series only 2 Bolt flanges with 3-inch bolt spacing <ul style="list-style-type: none"> • LF - Round Bolt Holes • LX - Square Bolt Holes
WHITE HOUSINGS= "W" OR BLACK HOUSINGS= "B"			
PAMSPPL205-16W = PA M S PPL 205-16 W <div style="display: flex; justify-content: space-around; align-items: center;"> <div style="text-align: center;"> Poly-Acetal Stainless Balls </div> <div style="text-align: center;"> Single Row Pillow Block </div> <div style="text-align: center;"> 1 Inch White </div> </div>			

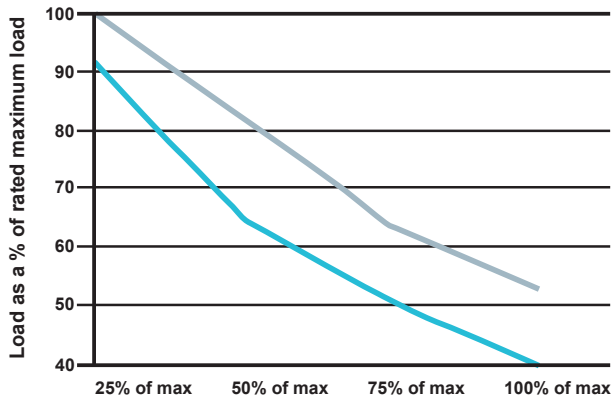
**ALL INSERTS HAVE A NYLON CAGE AND BACK SHIELD.
COMPLETE UNITS ARE AVAILABLE WITH OPEN OR CLOSED COVERS UP ON REQUEST.**

Underwater Self-Lubricating Bearings

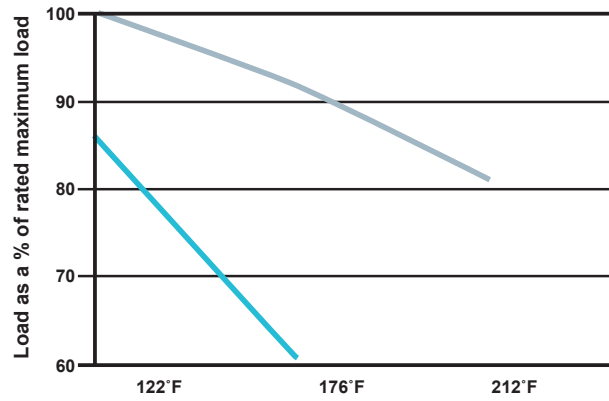


PH: (800) 882-8642 • FAX: (847) 759-0630
www.amibearings.com

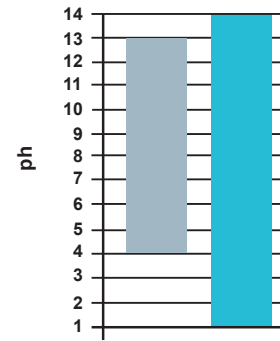
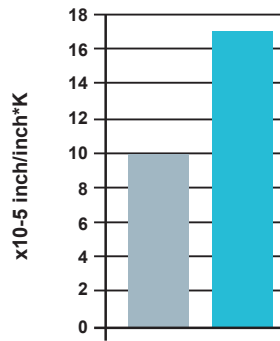
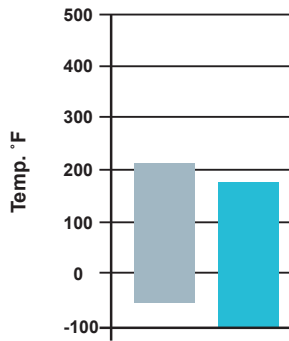
Capacity versus Speed



Capacity versus Temperature



ACETAL ("PA") ETHYLENE ("PE")



Bore	Number	Bearing OD		Single Row (S)			Double Row (D)			Sleeve (V)		
		Inch	Metric	Static	Dynamic	Max rpm	Static	Dynamic	Max rpm	Static	Dynamic	Max rpm
3/8	200-6	1.8504	47	69	107	1,050	131	203	945	80	28	640
12mm	201									95	35	530
1/2	201-8									120	41	425
15mm	202									136	46	375
5/8	202-10									154	54	320
17mm	203	2.0472	52	81	113	950	154	215	855	187	75	255
20mm	204									250	100	212
3/4	204-12									331	132	180
25mm	205	2.4409	62	92	140	800	175	266	720	250	100	212
7/8	205-14											
1	205-16											
30mm	206											
1-1/16	206-17											
1-1/8	206-18	2.8346	72	104	157	700	198	298	630	331	132	180
1-3/16	206-19											
1-1/4	206-20											
35mm	207											
1-1/4	207-20	3.1496	80	112	167	625	213	317	563	370	173	160
1-5/16	207-21											
1-3/8	207-22											
1-7/16	207-23											
40mm	208	2.4409	62	92	140	800	175	266	720	250	100	212
1-1/2	208-24											

NOTE: All Static/Dynamic load ratings are given in lbf.