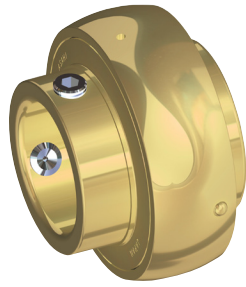


Corrosion Bearings with "RF" Seal & Slinger



PH: (800) 882-8642 • FAX: (847) 759-0630
www.amibearings.com



MUC200RF

"RF" Contact Seal
Stainless Steel
Wide Inner Ring
Set-Screw Locking

UC200MZ2RF

"RF" Contact Seal
Zinc Protected
Wide Inner Ring
Set-Screw Locking

UC200MZ20RF

"RF" Contact Seal
Kanigen Protected
Wide Inner Ring
Set-Screw Locking

MSER200RF

"RF" Contact Seal
Stainless Steel
Cylindrical OD
Set-Screw Locking

UE200MZ20RF

"RF" Contact Seal
Kanigen Protected
Wide Inner Ring
Accu-Loc

AMI's unique design allows for cost effectiveness

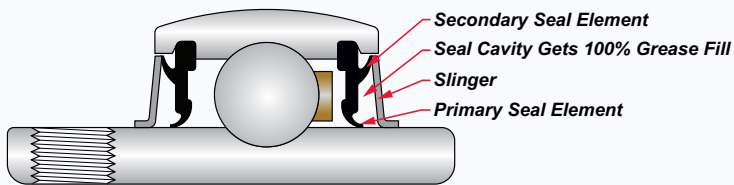
AMI's innovative seal snaps into the outer ring,
preventing interference with the bearing retainer.

Meets FDA regulations 21-CFR-172 & 21-CFR-178

Ideal for HACCP monitored facilities

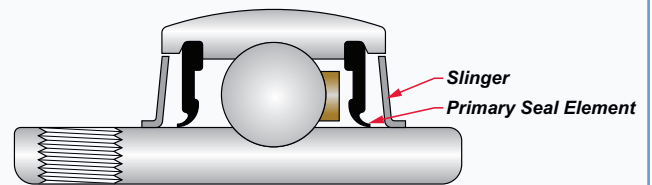
AMI's Patented "RF" Contact Seal

Available on all ring sizes listed above
excluding narrow width inner race ways.



Standard Contact Seal

Positive sealing for low, medium
and high speeds.



Designed for High Pressure Wash Down!



Corrosion Bearings with "RF" Seal & Slinger

AMI Bearings, Inc.
an **ASAHI** company

PH: (800) 882-8642 • FAX: (847) 759-0630
www.amibearings.com



Specifically designed for high-pressure washdown including beverage, food, and submersed applications.



- Patented Seal Design (PCT: WO 01/053713 A1)
- 440C Stainless Steel, Zinc, or Kanigen Inserts
- 304 Stainless Steel or Thermoplastic Housing
- Food Grade Grease: Citgo Mystic HT-FG2
Lubrication Benefits: High-Temp, Rust Inhibitor, Water Soluble, Resistant to Water Washout

RF Seal is a patented Double-Lip contact seal specially designed for high-pressure wash down as well as any application that requires maximum sealing efficiency (Figure 1.0).

This invention relates to a low-cost, pressure resistant, seal having enhanced sealing characteristics for use in a bearing assembly.

It's main purpose is to keep contamination from corroding or damaging the internal components. It's most effective against dirt, sawdust, food particles, and moisture.

The RF seal assembly should prevent contaminants from entering the raceway. Such contaminants can impede movement of the rolling elements and render the bearing assembly ineffective.

