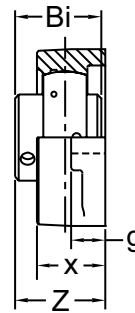
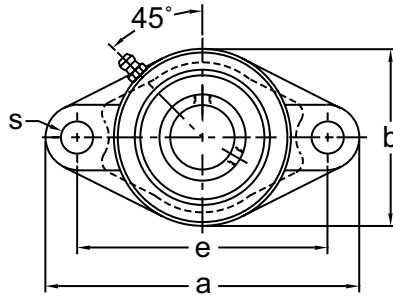




TWO-BOLT FLANGE UNITS

UCFL 300

**Set-Screw Locking
Wide Inner Ring
Cast Iron Housing
Insert detail-pg.124
Inch and Metric**



Shaft Diam. (in.)	AMI Unit #	List Price	Dimensions (in.)								Bolt Size (in.)	Bearing #	Housing #	Weight (lb.)
			a	e	g	x	s	b	Z	Bi				
1	UCFL305-16	115.10	5-7/8	4-29/64	1/2	1-5/32	3/4	3-5/32	1.535	1.496	5/8	UC305-16	FL305	2.45
1-3/16	UCFL306-19	160.30	7-1/8	5-9/32	19/32	1-1/4	29/32	3-35/64	1.732	1.693	3/4	UC306-19	FL306	3.35
1-1/4	UCFL307-20	195.40	7-5/16	5-35/64	5/8	1-13/32	29/32	3-15/16	1.929	1.890	3/4	UC307-20	FL307	4.01
1-7/16	UCFL307-23											UC307-23		
1-1/2	UCFL308-24	227.40	7-7/8	6-7/32	21/32	1-9/16	29/32	4-13/32	2.205	2.047	3/4	UC308-24	FL308	5.35
1-11/16	UCFL309-27											UC309-27		
1-3/4	UCFL309-28	281.70	9-1/16	6-31/32	23/32	1-23/32	63/64	4-59/64	2.362	2.244	7/8	UC309-28	FL309	7.58
1-7/8	UCFL310-30											UC310-30		
1-15/16	UCFL310-31	335.80	9-1/2	7-23/64	3/4	1-7/8	63/64	5-33/64	2.638	2.402	7/8	UC310-31	FL310	9.59
2	UCFL311-32											UC311-32		
2-3/16	UCFL311-35	449.60	9-13/16	7-51/64	25/32	2-1/16	63/64	5-29/32	2.795	2.598	7/8	UC311-35	FL311	11.40
2-7/16	UCFL312-39	550.10	10-5/8	8-11/32	7/8	2-7/32	1-7/32	6-1/4	3.071	2.795	1	UC312-39	FL312	13.80
2-1/2	UCFL313-40	580.10	11-5/8	9-29/64	1	2-9/32	1-7/32	6-7/8	3.071	2.953	1	UC313-40	FL313	16.50
2-11/16	UCFL314-43											UC314-43		
2-3/4	UCFL314-44	700.50	12-3/8	9-27/32	1-1/8	2-13/32	1-3/8	7-15/16	3.189	3.071	1-1/8	UC314-44	FL314	20.30
2-15/16	UCFL315-47											UC315-47		
3	UCFL315-48	869.80	12-5/8	10-1/4	1-3/16	2-19/32	1-3/8	7-11/16	3.504	3.228	1-1/8	UC315-48	FL315	22.30
3-3/16	UCFL316-51	988.60	14	11-3/16	1-1/4	2-11/16	1-1/2	8-1/4	3.543	3.386	1-1/4	UC316-51	FL316	28.10
3-7/16	UCFL318-55											UC318-55		
3-1/2	UCFL318-56	1059.50	15-3/16	12-25/64	1-7/16	3	1-1/2	9-1/4	3.937	3.780	1-1/4	UC318-56	FL318	38.10
3-15/16	UCFL320-63											UC320-63		
4	UCFL320-64	1263.30	17-3/8	14-3/16	1-9/16	3-11/16	1-47/64	10-5/8	4.921	4.252	1-1/2	UC320-64	FL320	59.10
4-7/16	UCFL322-71	2195.10	18-1/2	15-23/64	1-21/32	3-25/32	1-47/64	11-13/16	5.157	4.606	1-1/2	UC322-71	FL322	73.8
Dimensions (mm)														
25	UCFL305	115.10	150	113	13	29	19	80	39	38	M16	UC305	FL305	2.45
30	UCFL306	160.30	180	134	15	32	23	90	44	43	M20	UC306	FL306	3.35
35	UCFL307	195.40	185	141	16	36	23	100	49	48	M20	UC307	FL307	4.01
40	UCFL308	227.40	200	158	17	40	23	112	56	52	M20	UC308	FL308	5.35
45	UCFL309	281.70	230	177	18	44	25	125	60	57	M22	UC309	FL309	7.58
50	UCFL310	335.80	240	187	19	48	25	140	67	61	M22	UC310	FL310	9.59
55	UCFL311	449.60	250	198	20	52	25	150	71	66	M22	UC311	FL311	11.4
60	UCFL312	550.10	270	212	22	56	31	160	78	71	M27	UC312	FL312	13.8
65	UCFL313	580.10	295	240	25	58	31	175	78	75	M27	UC313	FL313	16.5
70	UCFL314	700.50	315	250	28	61	35	185	81	78	M30	UC314	FL314	20.3
75	UCFL315	869.80	320	260	30	66	35	195	89	82	M30	UC315	FL315	22.3
80	UCFL316	988.60	355	285	32	68	38	210	90	86	M33	UC316	FL316	28.1
85	UCFL317	1059.50	370	300	32	74	38	220	100	96	M33	UC317	FL317	32.3
90	UCFL318	1236.30	385	315	36	76	38	235	100	96	M33	UC318	FL318	38.1
95	UCFL319	1372.60	405	330	40	94	41	250	121	103	M36	UC319	FL319	48.6
100	UCFL320	1627.70	440	360	40	94	44	270	125	108		UC320	FL320	59.1
105	UCFL321	1942.90	440	360	40	94	44	270	127	112	M39	UC321	FL321	62.9
110	UCFL322	2195.10	470	390	42	96	44	300	131	117		UC322	FL322	73.8
120	UCFL324	2844.10	520	430	48	110	47	330	140	126	M42	UC324	FL324	101.9
130	UCFL326	3732.80	550	460	50	115	47	360	146	135	M42	UC326	FL326	128.3
140	UCFL328	4535.00	600	500	60	125	51	400	161	145	M45	UC328	FL328	177.8

Lubrication fitting tap size 1/8-27 NPT

INTERCHANGES: UCFL3